

# NEWSLETTER

=====DECEMBER 2017=====

## PRESIDENTS REPORT

What another outstanding Maffra Show for 2017 with good weather for our daytime program. Unfortunately, the same can't be said for the night time carnival which was marred by serious rain. Entries were strong this year in all sections. This combined with the buzzing Food and Wine Court providing a wide variety of food, music and many free activities for children makes our show a very entertaining event.

The pavilions were spectacular with wonderful floral and art exhibits. The Eco Challenge, the Maffra Show artistic program and the trade sites provided other interesting elements

We are always looking to improve our facilities and this year have been successful in obtaining 3 grants. Thanks to DEDJTA with a grant to help with drainage issues in the Cattle pavilion, ExxonMobil for a grant to top dress the Jack Williamson Oval and the Wellington Shire for a Quick Response Grant for our Food and Wine Court.

We are especially grateful to our sponsors, who contribute so generously to our show. This year I would like to acknowledge our first ever Platinum sponsor: the Maffra and District Community Bank Branch, who are the major sponsor of our Night Time Carnival. Not only have they assisted financially but they also worked in the canteen.

Other prominent sponsors include the Maffra Community Sports Club and Murry Goulburn.

Our show runs in a professional and efficient manner. We are constantly updating our administrative processes.

This year we trialed an electronic entry system with schools and hopefully next year, exhibitors will be able to lodge and pay for their entries on line.

In closing, I would like to acknowledge the wonderful work of our show committee, who are passionate, innovative and hard working to ensure a great annual show. This year we have been fortunate in gaining four new members, three in the Horse section and one in the Beef section, bringing youth and vitality to our committee.

### Pavilion

Entries for the pavilion increased again this year with over 2200 entries received. Maffra primary celebrating their 150<sup>th</sup> year had every child in the school put an entry into the primary arts and crafts section. Maffra Secondary College put many entries into the Secondary Needlework classes. Flowers and Plants, Fruit and Vegetable and Floral Art all looked stunning in the Band

room. The Joan Laws Perpetual trophy winner for best Exhibit in the pavilion was Betty Clissold Sale. The Gwen Coffey (Lesson) award for Best



exhibit in Needlework winner was Heather Burgiel Maffra.

Our "Australian Cake with a Twist" open winner was Kelly Lett Airly, 2<sup>nd</sup> Jo Anne Hart Maffra,



Secondary School section, 1<sup>st</sup> Lydia Ryan Briagolong, 2<sup>nd</sup> Elise Hunt Stratford. Primary School winner 1<sup>st</sup> Noreen Brand Rosedale, 2<sup>nd</sup> Jackson Lett Airly. Rich Fruit Cake sponsored by McKenzie's winner was Kelly Lett Airly

### **ARENA**

Horse entries were up on last year and the quality of horses on both the Friday and the Saturday was excellent (even one competitor calling it the Maffra Royal, because of the outstanding quality of horses competing.) The grounds looked a picture, and the classes ran smoothly. Over all a great show. Some of the results were:

**Supreme Ridden** – “Royalwood Concerto” ridden by Madeline Frazer. Sponsored by: Equine Sports Therapy Maffra

**Supreme Led**- “Gentry Park Royalty” owned by Christine Chaffer

**Special Thoroughbred Class**- “Provence” ridden by Melinda Cooke Sponsored by: Sale Turf Club

**Apply Memorial** -Ashleigh Forehan on “Brooklyn Exclusive” Sponsored by the Lee Family

**Pony Club High-Point**- “Sophie Kootstra” on “LA Ronaldo” from Yinnar.

Sponsored by: Jack and Nancy Williamson Trust

We would sincerely like to thank all our judges, stewards, committee and helpers for making it the success that it is.

### **FOOD and WINE COURT**

The Food and Wine court was buzzing this year with its Australiana theme. The Pavlova competition and the decorated meringue were well contested. There were plenty of activities to entertain the children allowing their parents to sit and enjoy the food, wine and music. Highlights this year were the damper making for children and an indigenous cooking display and tasting of crocodile and kangaroo by Matt Dowsett.

### **NIGHT CARNIVAL**

The night carnival was again disrupted by rain. However our full program was completed and ended with the spectacular fireworks our show is renowned for. The evening started with the Maffra Mile with some outstanding results and in quite good conditions for running. The wood chop event was completed despite the slippery conditions and was a crowd pleaser from start to finish. The 4 wheel bike competition was also a lot of fun with 4 eager teams tearing up the paddock in a mud splattering display.

### **MAFFRA MILE**

#### **MAFFRA MILE - FEMALE**

1. Jessica Mayne 5.37

#### **MAFFRA MILE - MALE**

1. George Lancaster 5.06

### **SCHOOLS FRIDAY**

Our School's Friday Program has now been running for 10 years. 250 year 3 and 4 students from local primary schools attended and rotated through sessions provided by The Maffra Fire Brigade,

Gippsland Water, Badge making with Southern Rural Water, Wellington Shire's Sustainability Trailer, The Eco Hub alternative energy trailer, parachute games, craft activities, card making, local Cultural and Koorie Educator presentation and a slide activity provided by the Showman's guild.

The School's Friday Program is well supported by our local Primary Schools and this year we welcomed Airly Primary School. Many thanks to our committed presenters who provide informative and entertaining activities.

### **ECO CHALLENGE**

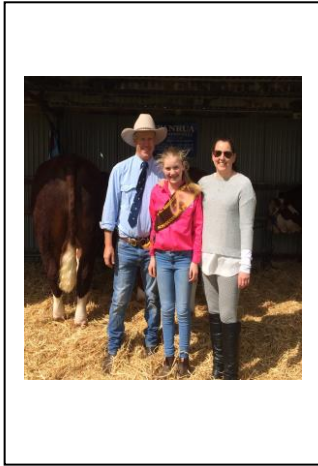
The Eco Challenge Pavilion was busy this year with exhibits from the Wellington Shire Sustainability Trailer, the Eco Hub alternative energy trailer, Victorian working party for Serrated Tussock, Landcare, Southern Rural Water and The Gippsland Woodturners. Along with this was Lamp upcycling with local artist Angi Thomas and St. Vincent De Paul, one of the greatest recyclers in Maffra. Special Thanks to Latrobe Valley Community Health Counselling and Carers Support Group for their information stand.

### **DAIRY**

Good entries were received again this year with the ever popular calf rearing competition being a favourite event. Good sponsorship and some new stewards and helpers saw these classes well contested and conducted.



## BEEF



There was an increase in numbers this year, double from the previous year with exhibitors from many areas of Gippsland. The supreme exhibit was awarded to Andrew Manson of Wanrua Poll Hereford Stud.

## GOATS

The goats were again a real crowd pleaser with the antics of the kids always worth watching. Entries were up with 52 class entries

## ARTISTIC PROJECT Alpacas



Once again the Maffra Show Artistic Project has produced some novel images for the Show. This year 20 artists have used their diverse talents to create images on wooden cut out alpacas. Previous years Cows, Chooks, Pigs, Dogs and Goats have been painted by local artists volunteering their time and skills to enhance the Maffra Show's Food and Wine court.

A variety of materials have been used with many images having a double meaning, are a play on words or just wild and fancy. Thanks to our

sponsors this year: **Maffra Pre Cast, Sale Sign Torque and Avon Timber and Roofing.**

## POULTRY

It has been another successful year in our Poultry pavilion. This wouldn't be without the invaluable support of our sponsors Keysteel Kennels, DeeBee ponies, Col Kincaid, GRP&GCinc, Ford family, Lauke Mills and Elders/Barastoc. With the help of these all our exhibitors went home with prizes and a goodie bag, everyone was a winner.

It was very encouraging to see some new poultry fancier's amongst the exhibitors. Some traveling from as far as Bruthen, Yarram and Warragul. And of course there was our local fanciers too. Between them they penned 175 birds to be judged by Mr Angus MacDonald.

Angus was impressed by the variety and the quality of many of the birds and his Bird in Show



went to local exhibitor L. Fulford with Modern Game Birchen Bantam Female.

Junior Bird in Show went to D. Hague with an Australian Langshan clack bantam female which also went on to take out Reserve Bird in Show. The pavilion honoured the Australian breeds of Poultry and waterfowl

with Aussie Flags and information about them. Many of these breeds being exhibited on the day. Langshan, Australorp, Pit Game, Aussie Game and the cue Australian Call Duck just to name a few. The free ranging Malay cock was a conversation starter. He was simply unfazed by all the talk about him and he continued to happily wander about the pavilion without a ruffle of a feather



## Sponsors

### Platinum:

**Maffra & District Community Bank Branch**

### Gold:

**Maffra Community Sports Club  
Murray Goulburn**

### Silver:

<b>Andersons Removals</b>	<b>Animal Clinic</b>
<b>Equine Sports Therapy</b>	<b>Ingram Livestock</b>
<b>JW &amp; HL O'Connor Pty.Ltd</b>	<b>Maffra Poly and Pumps</b>
<b>Transedel Pty Ltd</b>	<b>Vic Engineering and Silos</b>
<b>Showbag time</b>	<b>Pantac Security</b>

### Grants:

**DEDJTR Wellington Shire ExxonMobil**

Hardweld Pty Ltd  
Vicki Hamilton  
Landcare  
Gippsland Veterinary  
Hospital  
Sale Turf Club  
Bedggood's Transport  
Gippsland Real Estate  
Maffra Garden Club  
Maffra NewsXpress  
Austs Quality Pet Foods  
Browns Stockfeed Pty Ltd  
GBG Concrete  
Johnson Street Clinic  
Macalister Tyre Service  
Maffra Floors  
Maffra Pre-mix Concrete  
Maffra Sheetmetal Works  
Semmens Funerals  
The Stable Door  
Wilmour Motors  
Greenwood Livestock  
Gipps. R. Poultry & G Club  
Mr A & Mrs T. Lee  
Maffra Medical Group  
Sonya Ford  
Crawford & Smart Pty Ltd  
Mr & Mrs F. Crooke  
B & L Heyne  
Adams Accounting  
Agri-Gene P/L

B & A Lett Funerals  
Boyles Bus Service  
J & M Bravington  
Brown Wigg  
Cambrai Hostel Maffra  
V & S Hamilton  
Keysteel Kennels  
Macalister Earthmoving  
Maffra Lioness Club  
Rosemary Kardinaal  
Morelli's Furniture  
Semex Pty Ltd  
Thompson Timber &  
Traralgon Stock Supplies  
Ian Manson Pty Ltd  
Sale Floral Art Group  
CWA Avon  
Hague Family  
John Cronin Optometrist  
Lemchens & Skulte  
CWA Maffra  
Maffra Lioness Club  
Paint Me Silly  
Dee Bee Ponies  
Colin Kincaid  
Mrs Anne Du Ve  
Bairnsdale Horse Centre  
Bairnsdale Stockfeeds  
Bega Cheese  
Bunnings Warehouse  
Cervus

Chris Durrant  
Elders Rural Services  
Genetics Australia  
Horseland Traralgon  
Maffra Post Office Shop  
Shelly Penny  
Stobies Mensland  
Sale Sign Torque  
Avon Timber and Roofing  
Gippsland Pre Cast  
Mrs V. Thomas  
Mrs Margret Scott  
Maffra Showcase Jewellers  
Alice Noble  
J & N Williamson Trust  
Maffra Web Design  
Rivalea Australia  
Calcimo Lime and Fertilizer  
Lauke Mills  
CWA North Gippsland  
Maffra Auto Elec  
Finishing Touch Browbands  
Marie Daly  
DMG Financial  
Johnsons Ag. Contracting  
Ag Work Pty Ltd  
RKJ Ag Services  
Donalda Motors  
Peter Stoitse Transport  
Semmens Funerals